



## **About this Easy Read**

This is about a plan to do research.

The research is about mental illness.

Mental illness is common in Australia.



People from the Social Policy Research Centre do the research.



The Social Policy Research Centre is called **SPRC** for short.



The research looks at programs that help people with mental illness.

# About the programs

The research is about 2 programs by NSW Health.

The programs are called

**Housing and Accommodation Support Initiative (HASI)**

and

**Community Living Supports (CLS)**



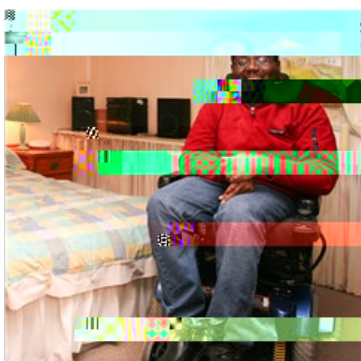
The programs provide services so people with mental illness can improve their lives.

The programs help people to reach their goals.

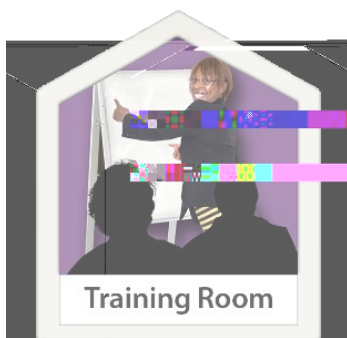
For example:



Do shopping or cooking



Move from hospital or prison back to home



Learn new skills

Find a job

Make



# How we do the research



# We talk to different people



People who use the programs



Families and carers

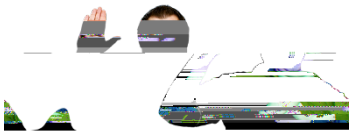


People who work for the programs



People from the government.

## Peer researchers

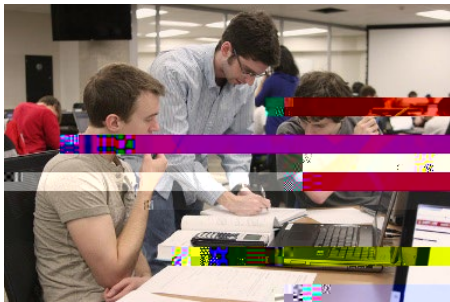


Peer researchers have a lived experience of the topic they are researching.

In this research, peer researchers are people who have a mental illness.



Some peer researchers are Aboriginal.



Peer researchers help plan this research.



They help do the research.



They give advice about how to include different people in the research.

