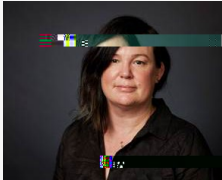


Publications

- [How to implement patient experience surveys and use their findings for service improvement: a qualitative expert consultation study in Australian general practice](#)
By Hyun Song, Sarah Dennis, Jean-Frédéric Lévesque, Mark Harris
- [Assessing primary care organization and performance: Literature synthesis and proposition of a consolidated framework](#)
By Jean-Frédéric Lévesque & more
- [Avoiding unnecessary hospitalisation for patients with chronic conditions: a systematic review of implementation determinants for hospital avoidance programmes](#)
By Jean-Frédéric Lévesque & more
- [Envisioning the future of clinical analytics: a modified Delphi process in New South Wales, Australia](#)
By Jean-Frédéric Lévesque & more
- [Does healthcare inequity reflect variations in peoples' abilities to access healthcare? Results from a multi-jurisdictional interventional study in two high-income countries](#)
By Mark Harris, Jean-Frédéric Lévesque & more
- [Biosocial and disease conditions are associated with good quality of life among older adults in rural eastern Nepal: Findings from a cross-sectional study](#)
By Uday Narayan, Sabuj Kanti Mistry, Cathy O'Callaghan & more
- [Impact of medical fitness to drive policies in preventing property damage, injury, and death from motor vehicle collisions in Ontario, Canada](#)
By Tracey Ma & more
- [Community health workers for noncommunicable disease prevention and control in Nepal: a qualitative study](#)
By Uday Narayan Yadav

People

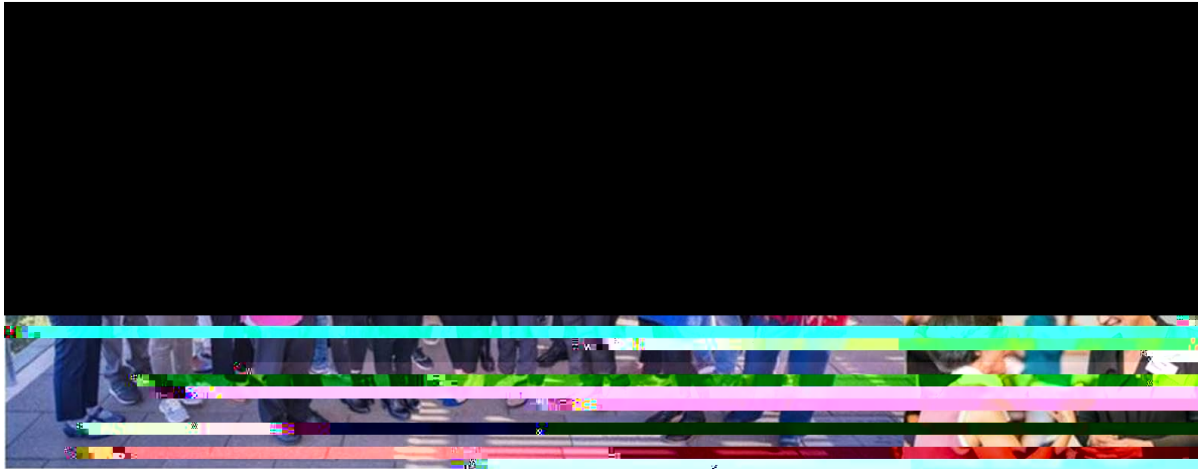


- **Dr Kerry Drysdale - HERDU Community Partnerships Fellow**

Dr Kerry Drysdale joins HERDU three days a week as our Community Partnerships Fellow. She holds a PhD in Cultural Studies and uses this disciplinary training to bring a critical cultural lens to issues of health and wellbeing among marginalised communities. She also holds a position with the Centre for Social Research in Health within the new Faculty of Arts, Architecture and Design (working name), where she has been engaging in collaborative research with vulnerable people. Among other research interests, Dr Drysdale is also an avid drag king fan and has published her first monograph on the emergence and decline of Sydney's drag king scene. Please welcome Kerry to the Centre.

Communication & Education

- Congrats to Dr. Saggi Zapart has just won the **SWSLHD Elizabeth Millen Award for Promoting Health Equity**
 - Congrats to Uday Narayan Yadav has recently awarded the **Professor Susan Holland Casual Academic Performance Award for 2020** by Torrens University, Australia. This award recognises the teaching faculty for their excellent contribution towards learning and teaching.
 - The School presented CHETRE, CPHCE with the **SWS Research Team of the Year** in a ceremony at the Liverpool Clinical Skills and Simulation Centre on last week.
 - Professor Evelyne de Leeuw has been appointed as a **member of the Editorial Board** [Oxford Research Encyclopedia in Global Public Health, Oxford University Press](#)
 - Professor Mark Harris has been re-elected as a member of the **board of CESPHN** for another two years.
 - 'Shisha No Thanks' project won the Premier's [Multicultural Communications Award](#) for Business Campaign of the Year. The project was a collaboration between SESLHD
-
-



Copyright © 2019 UNSW Sydney. All Rights Reserved.
Cricos Provider Code 00098G