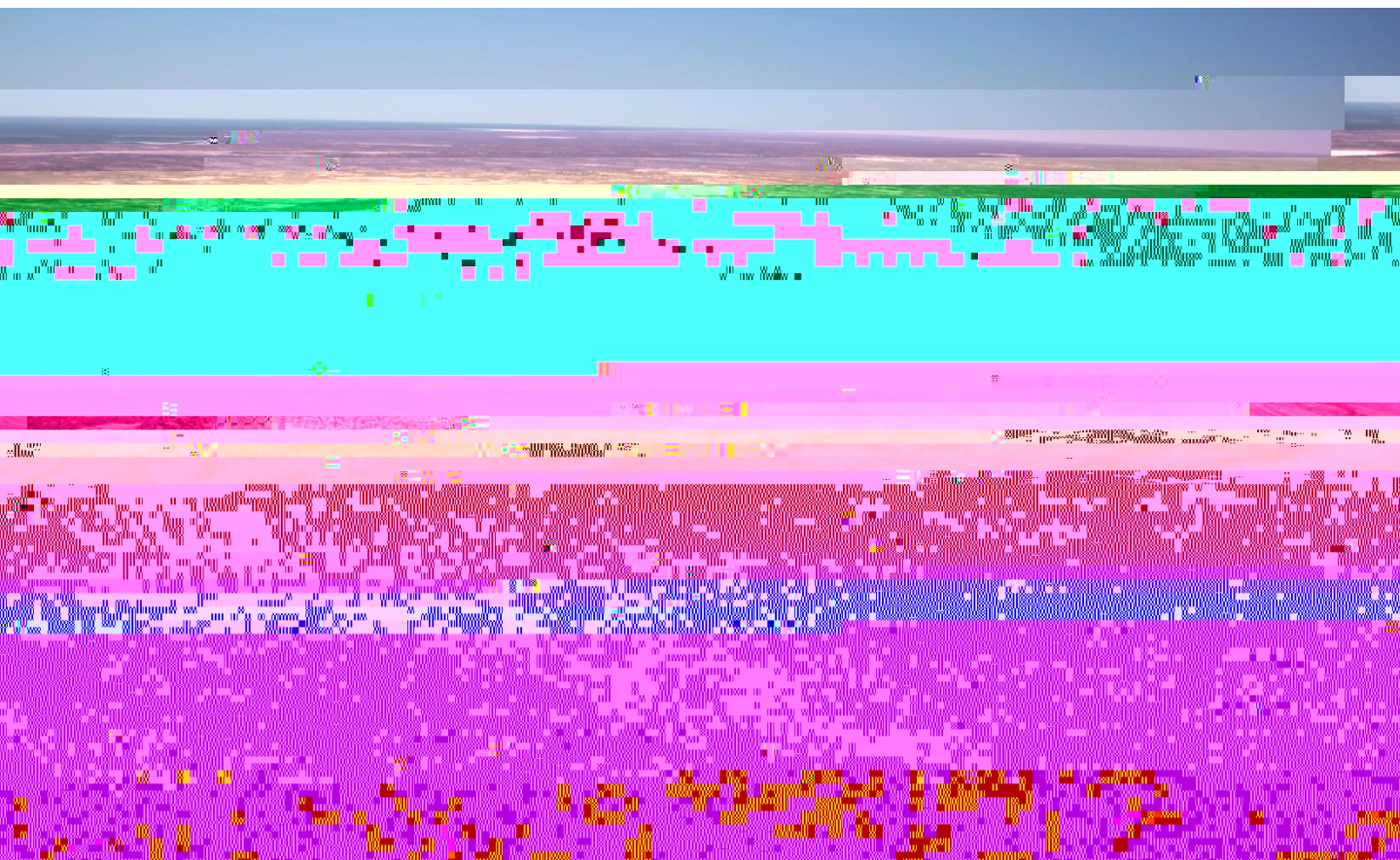




Aerial Survey of Wetland Birds in Eastern Australia - October 2014 Annual Summary Report

J.L. Porter^{1,2}, R.T. Kingsford¹ and K. Brandis¹
Centre for Ecosystem Science, School of Biological, Earth and Environmental Sciences¹
Office of Environment & Heritage NSW²



Summary

1. Most of the northern survey area has experienced extremely dry conditions since 2012, with few large areas of wetland available. However, the southeast part of the survey reg 0 5 rd with Can

This survey is run by the University of NSW and funded by the NSW Office of Environment & Heritage, with additional funding provided by the South Australian Department of Environment and Heritage, the Queensland Department of Environment and Resource Management, the Victorian Department of Sustainability and Environment and the Department of Environment of the Australian Government.

We thank Terry Korn, Peter Morris, Paul Wainwright and Mark Ziembicki for acting as expert observers during the survey, and Richard Byrne of NSW National Parks and Wildlife, NSW Office of Environment and Heritage for piloting aircraft. We also thank Justin McCann, Sharon Ryall and James Haggerty for assisting with data entry and quality assurance.

Figure 2. Total wetland area

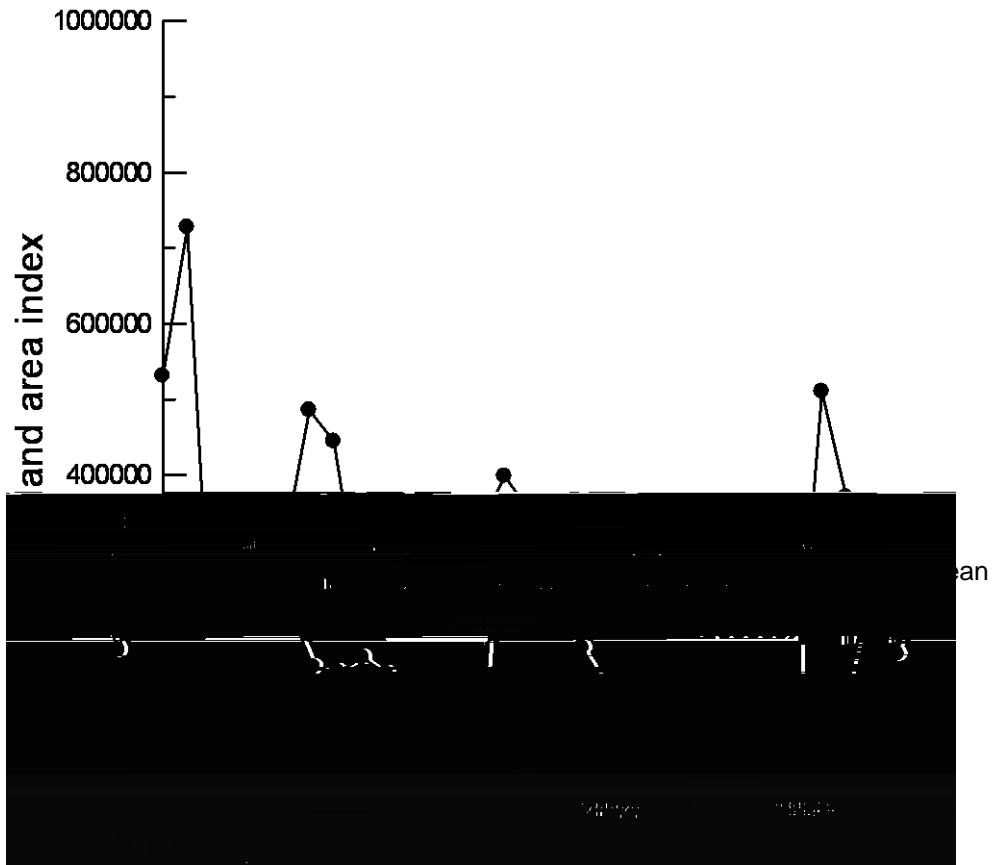


Figure 3. Total waterbirds

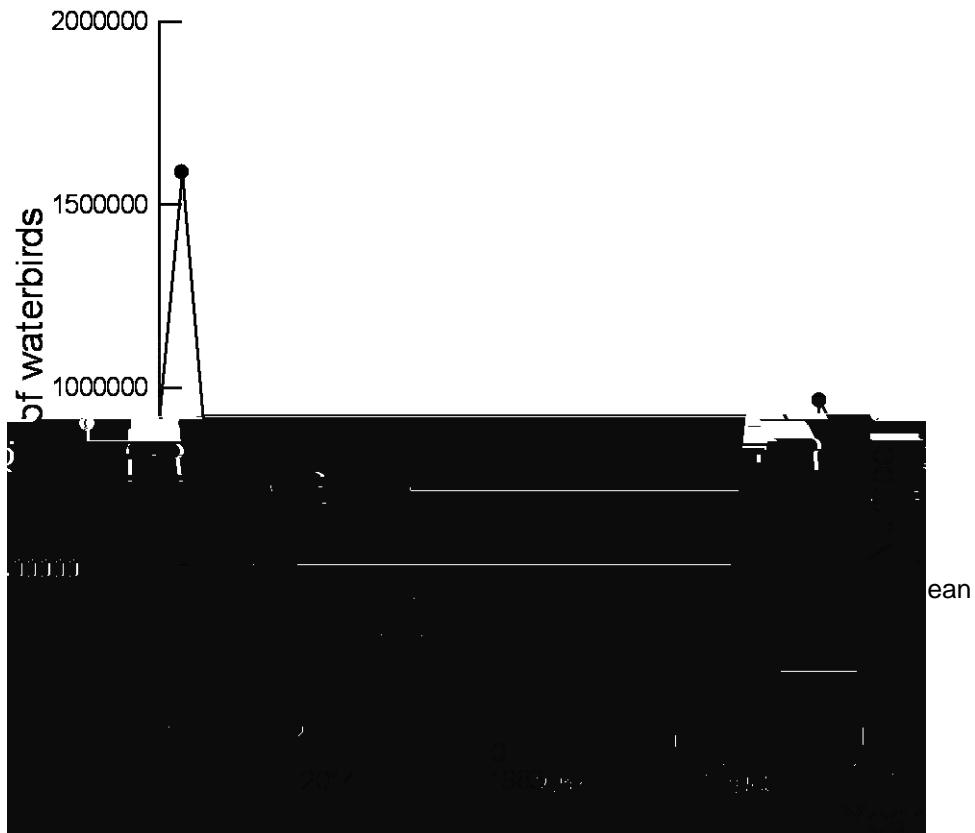
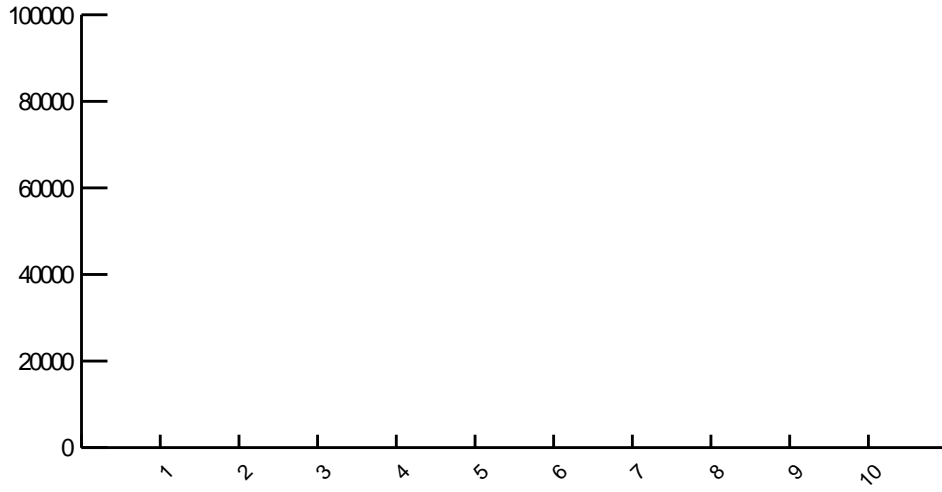


Figure 4. Band totals 2014



Scales vary on graph axes

Figure 5. Breeding index (all species)

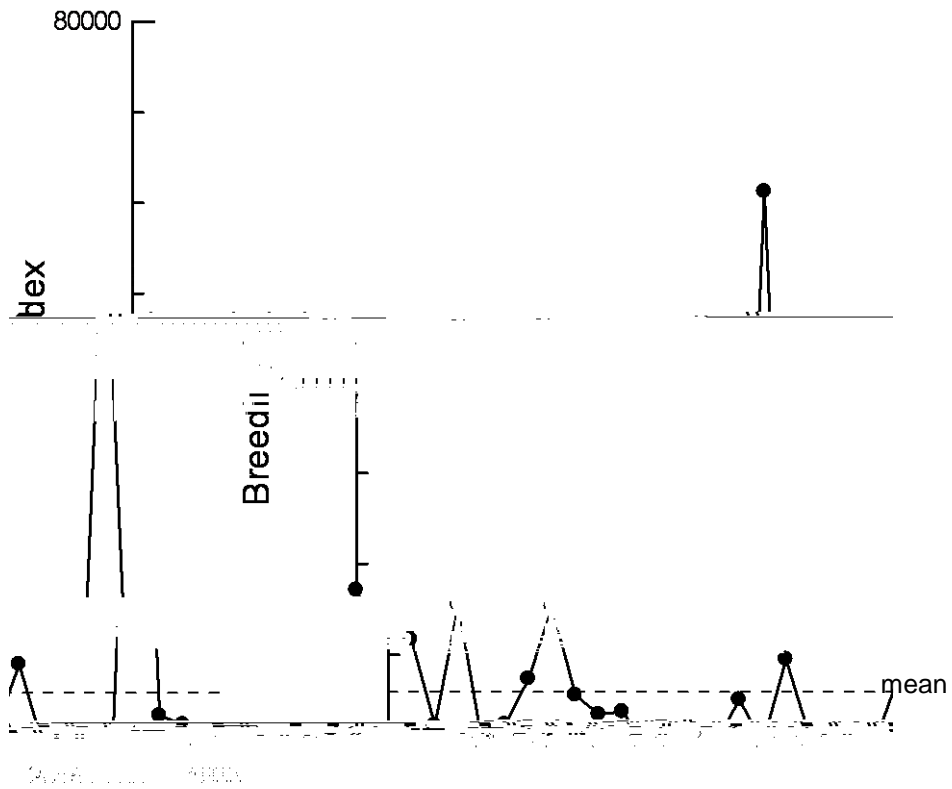
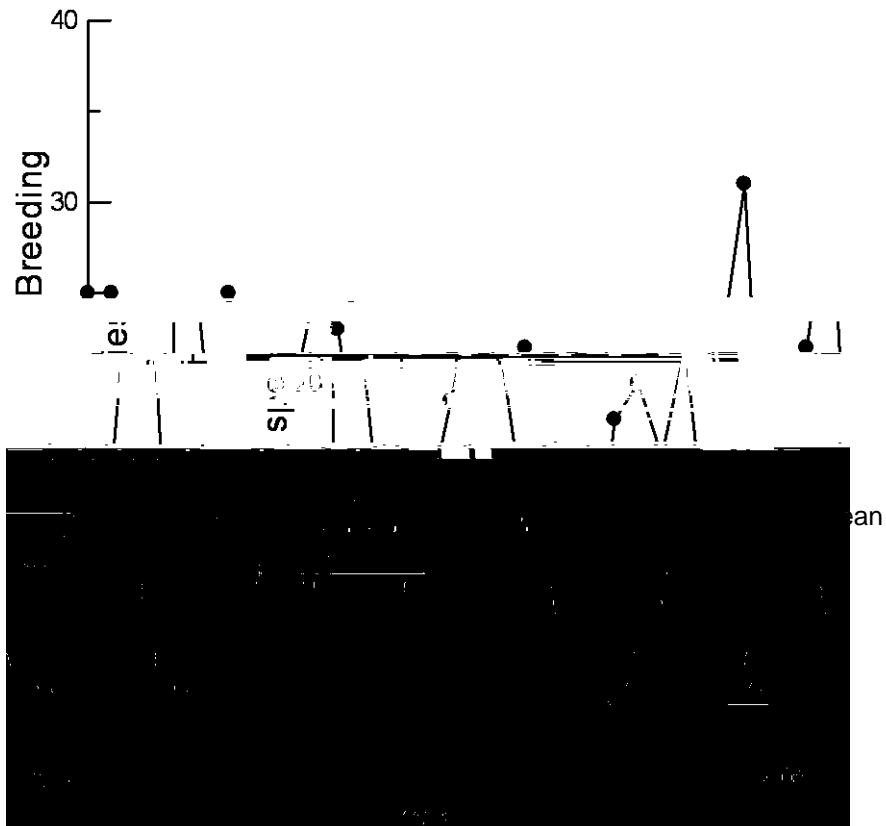


Figure 6. Number of species breeding

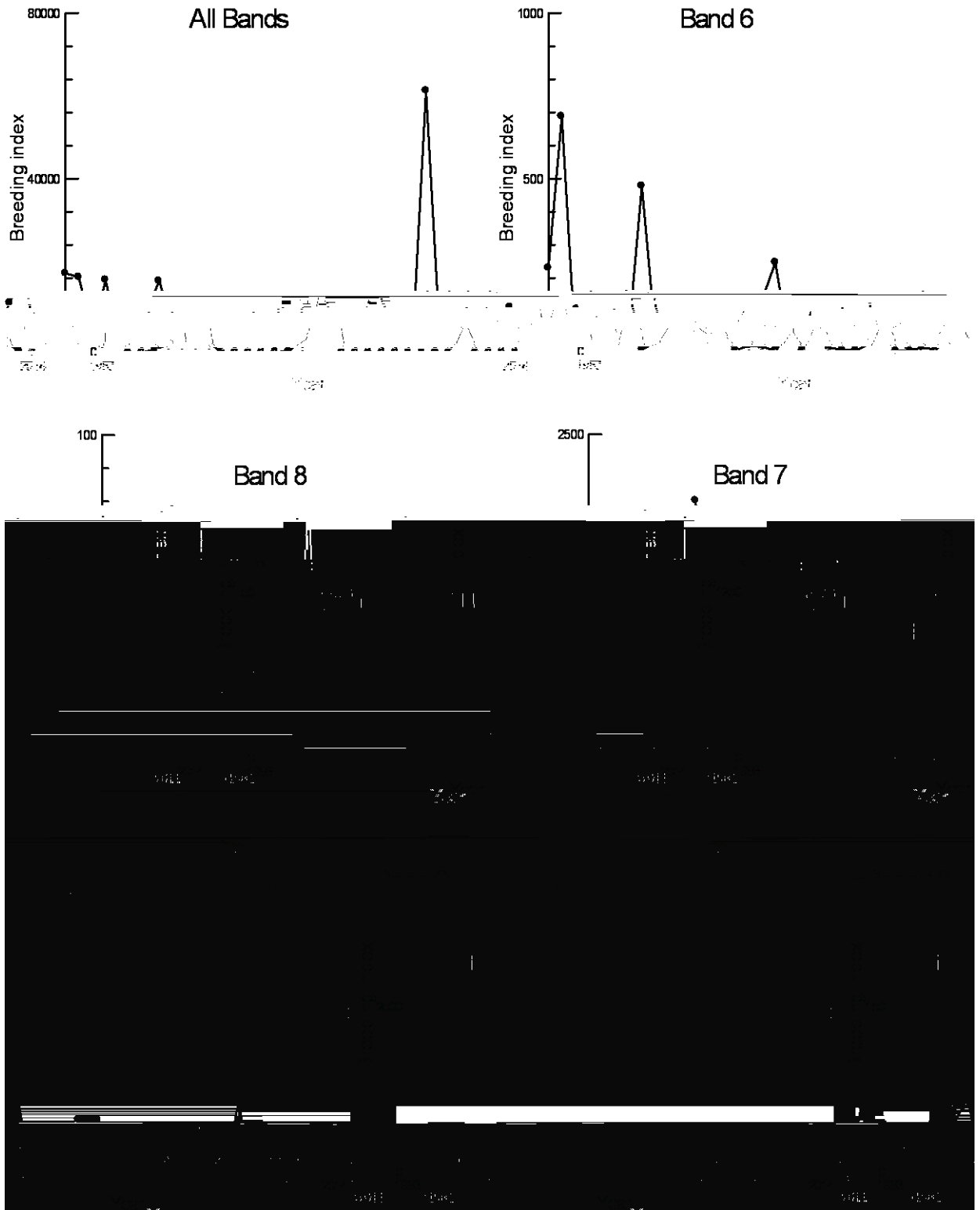


Scales vary on graph axes

Figure 7. Breeding index (all species) Bands 1-5

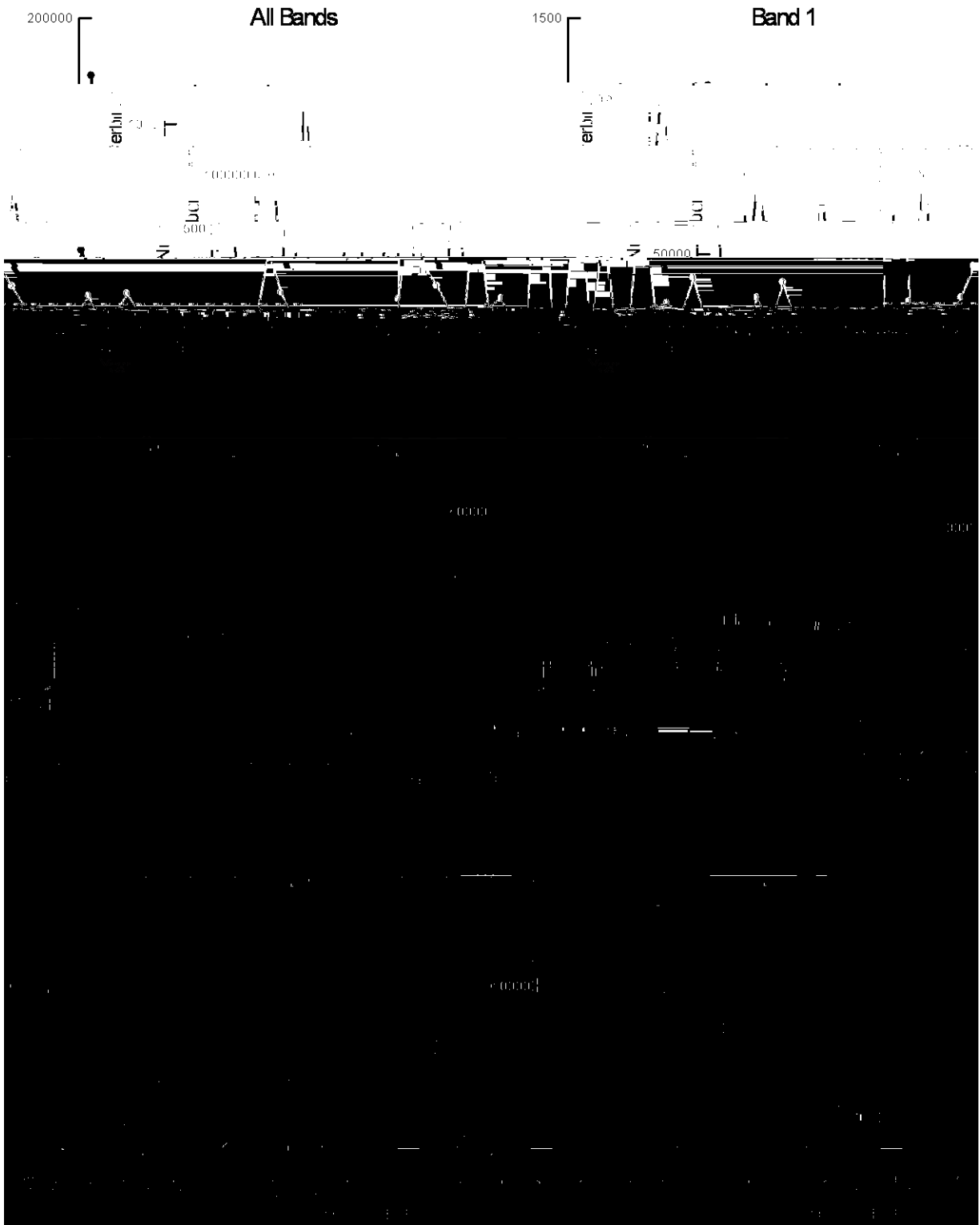
Scales vary on graphs

Figure 8. Breeding index (all species) Bands 6-10



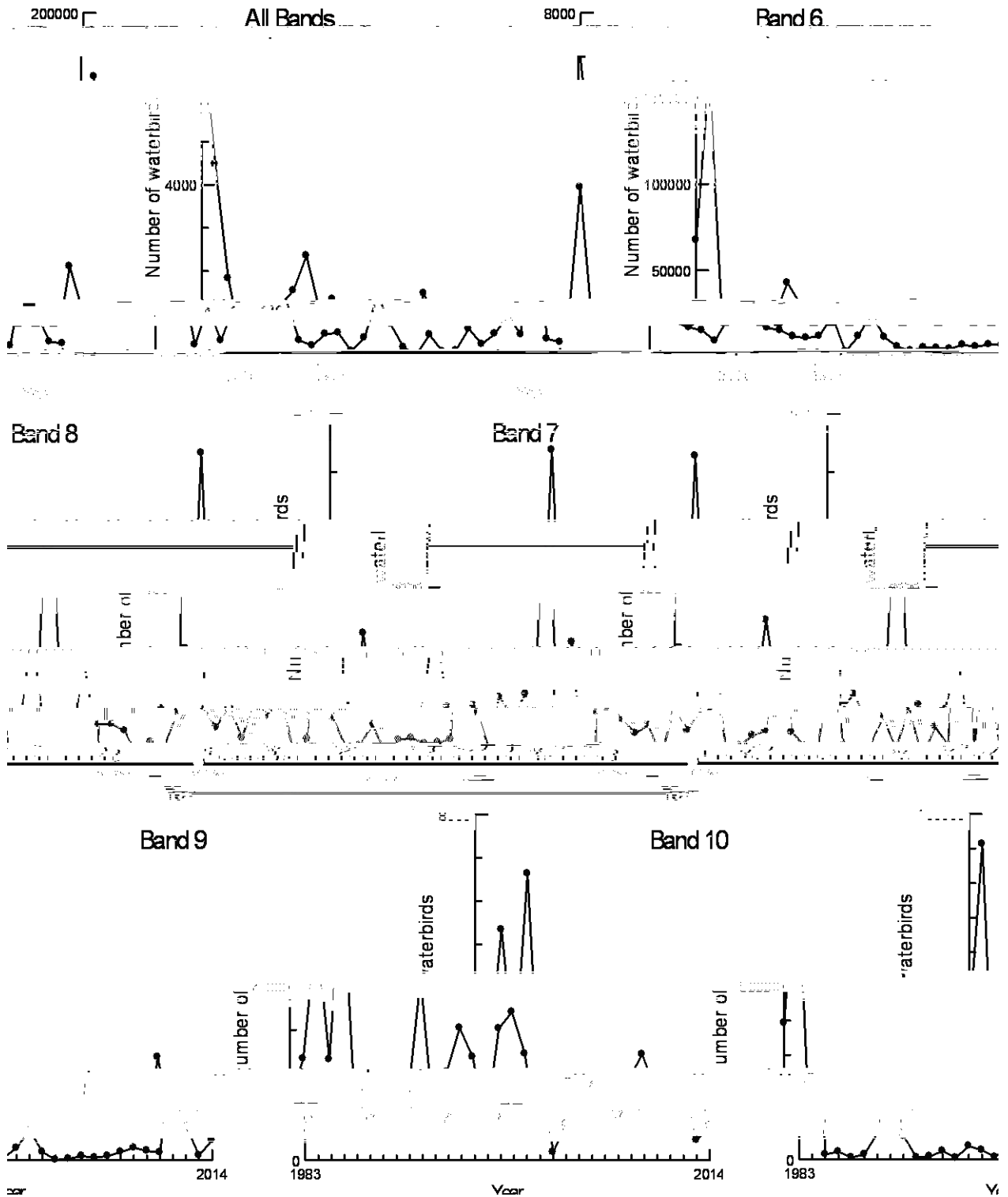
Scales vary on graphs

Figure 9. Pacific black duck Bands 1-5



Scales vary on graphs dashed line indicates long term average

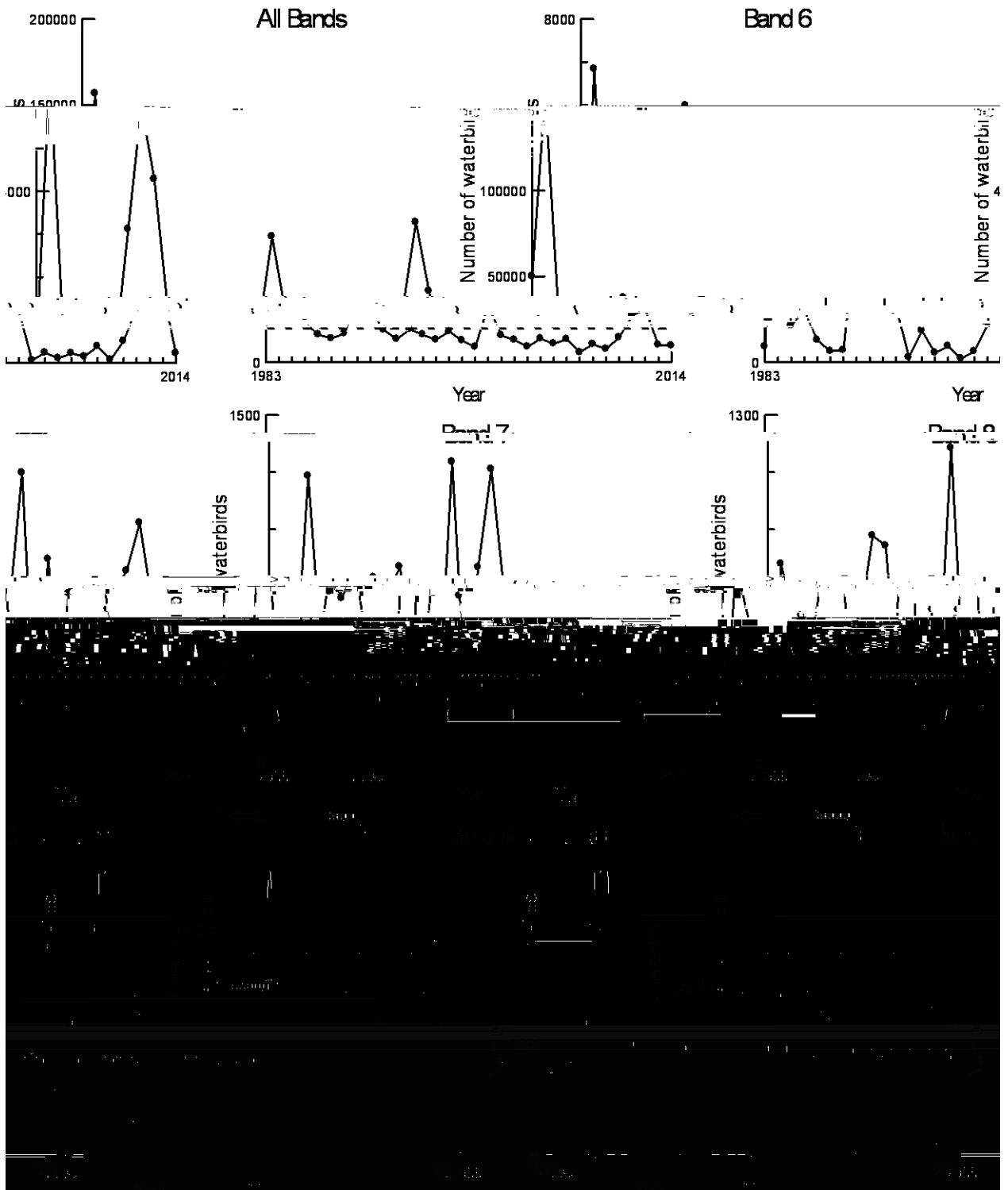
Figure 10. Pacific black duck Bands 6-10



Scales vary on graphs dashed line indicates long term average

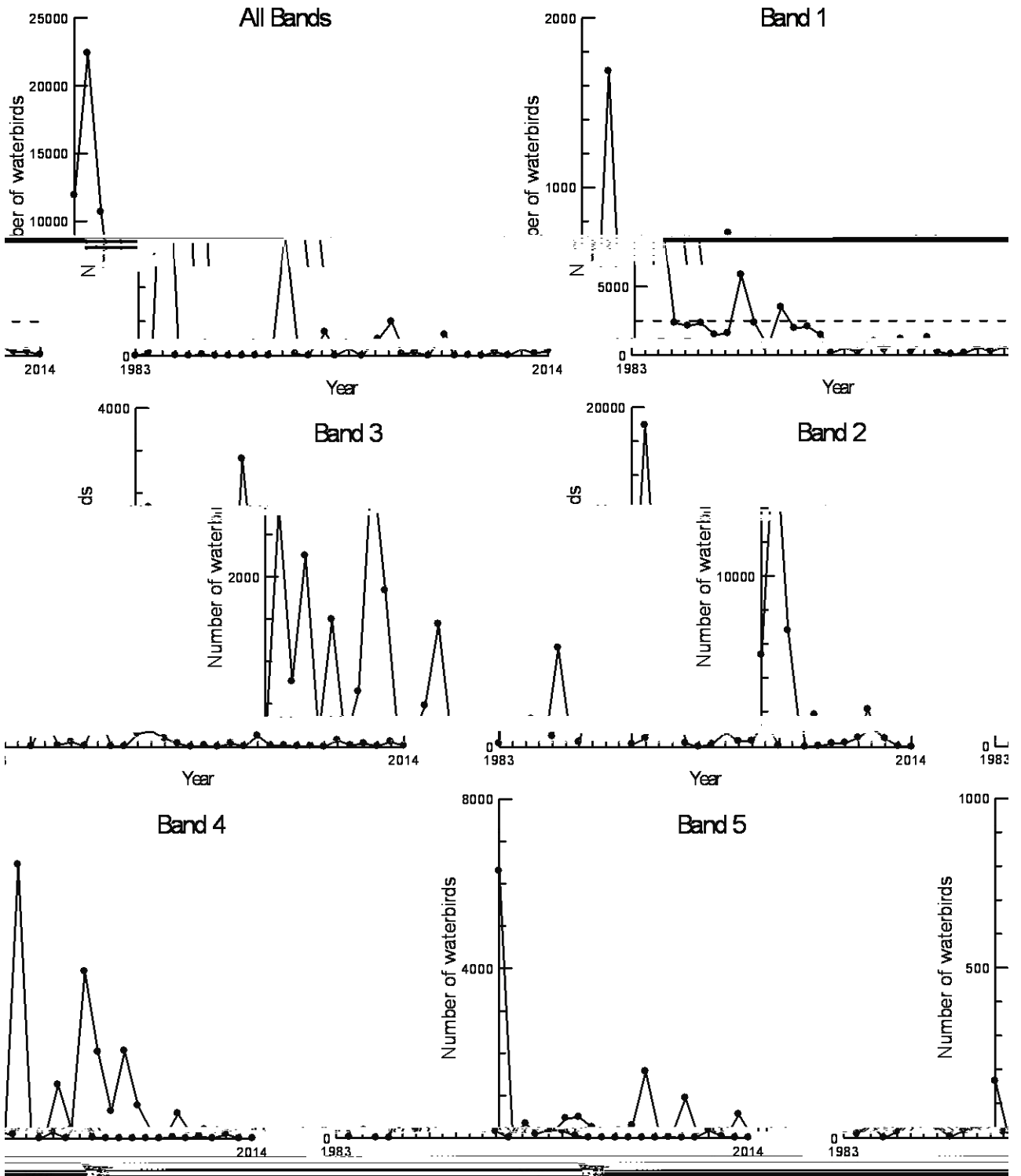
Figure 11. Black swan Bands 1-5

Figure 12. Black swan Bands 6-10



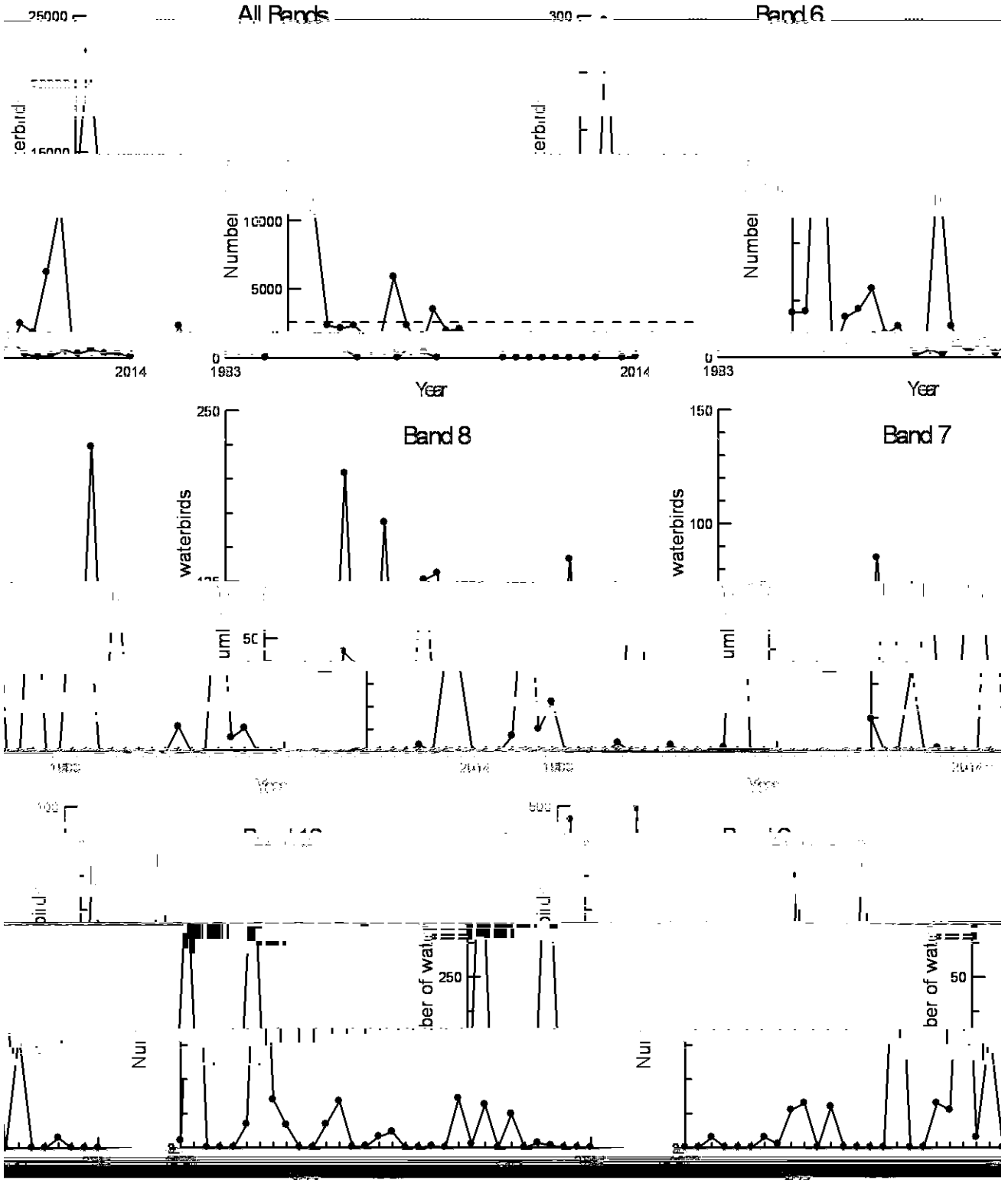
Scales vary on graphs dashed line indicates long term average

Figure 13. Australasian shoveler Bands 1-5



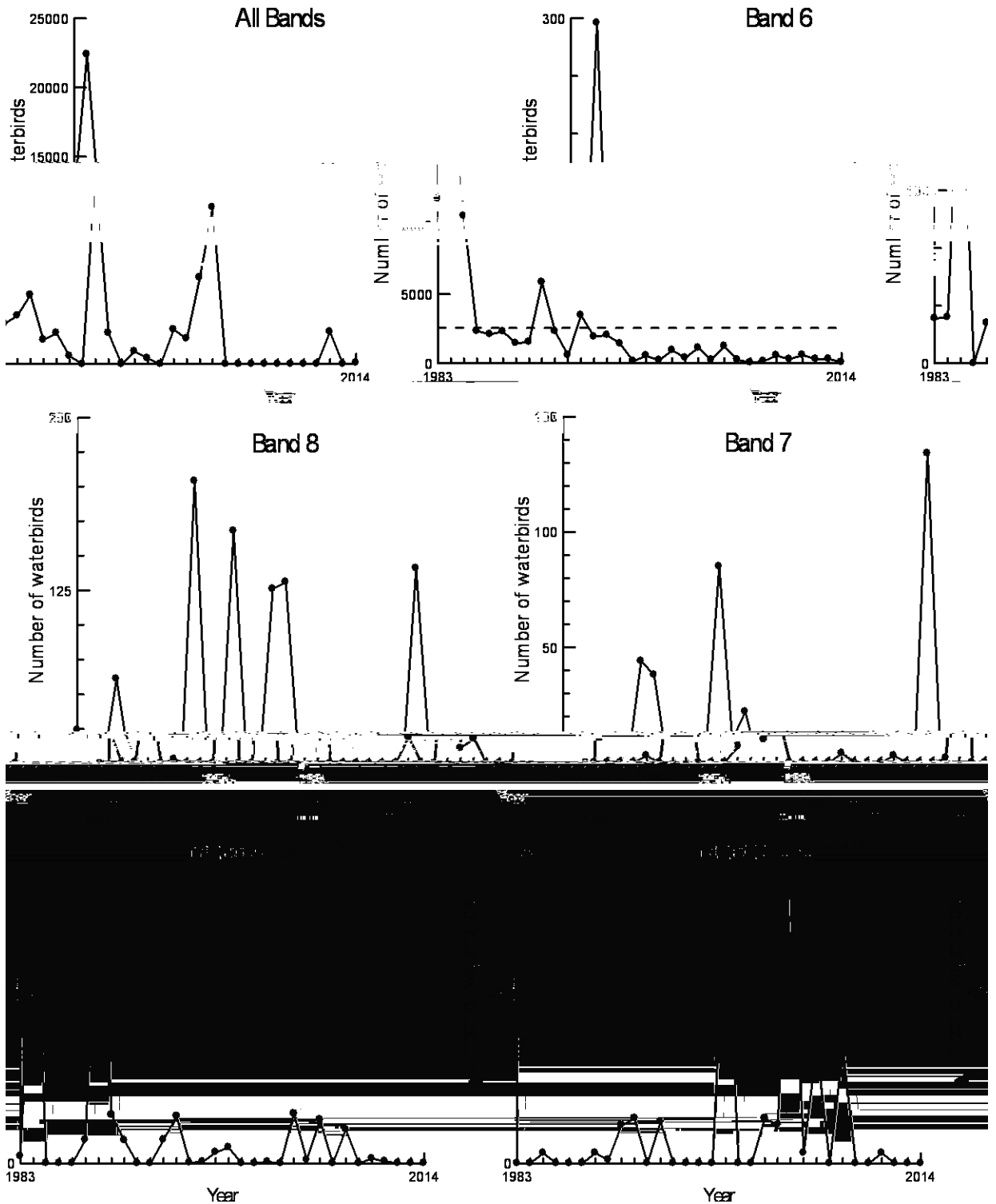
Scales vary on graphs dashed line indicates long term average

Figure 14. Australasian shoveler Bands 6-10



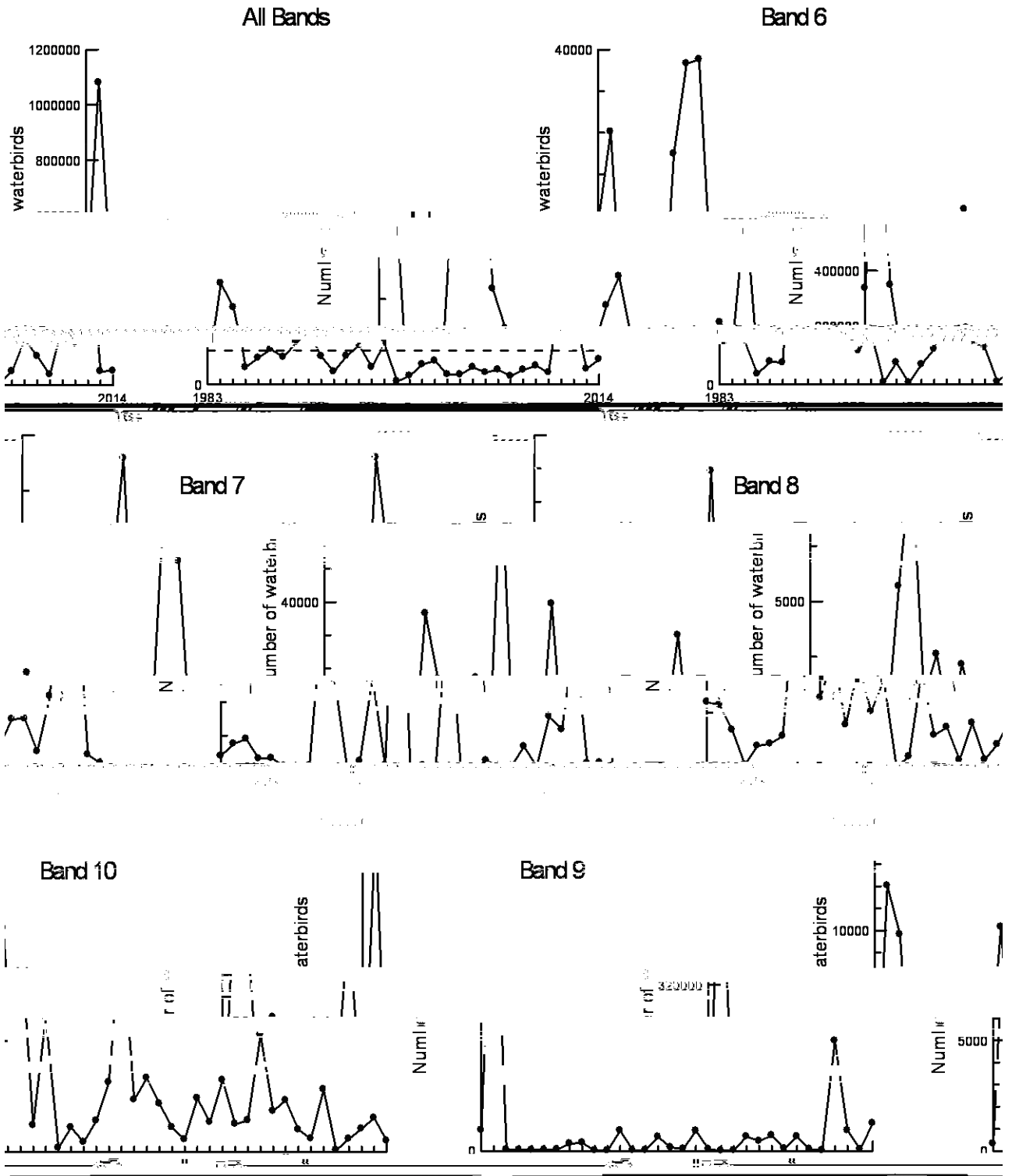
Scales vary on graphs dashed line indicates long term average

Figure 15. Chestnut teal Bands 1-5



Scales vary on graphs dashed line indicates long term average

Figure 17. Grey teal Bands 6-10



Scales vary on graph dashed line indicates long term average s

Figure 18. Hardhead Bands 1-5

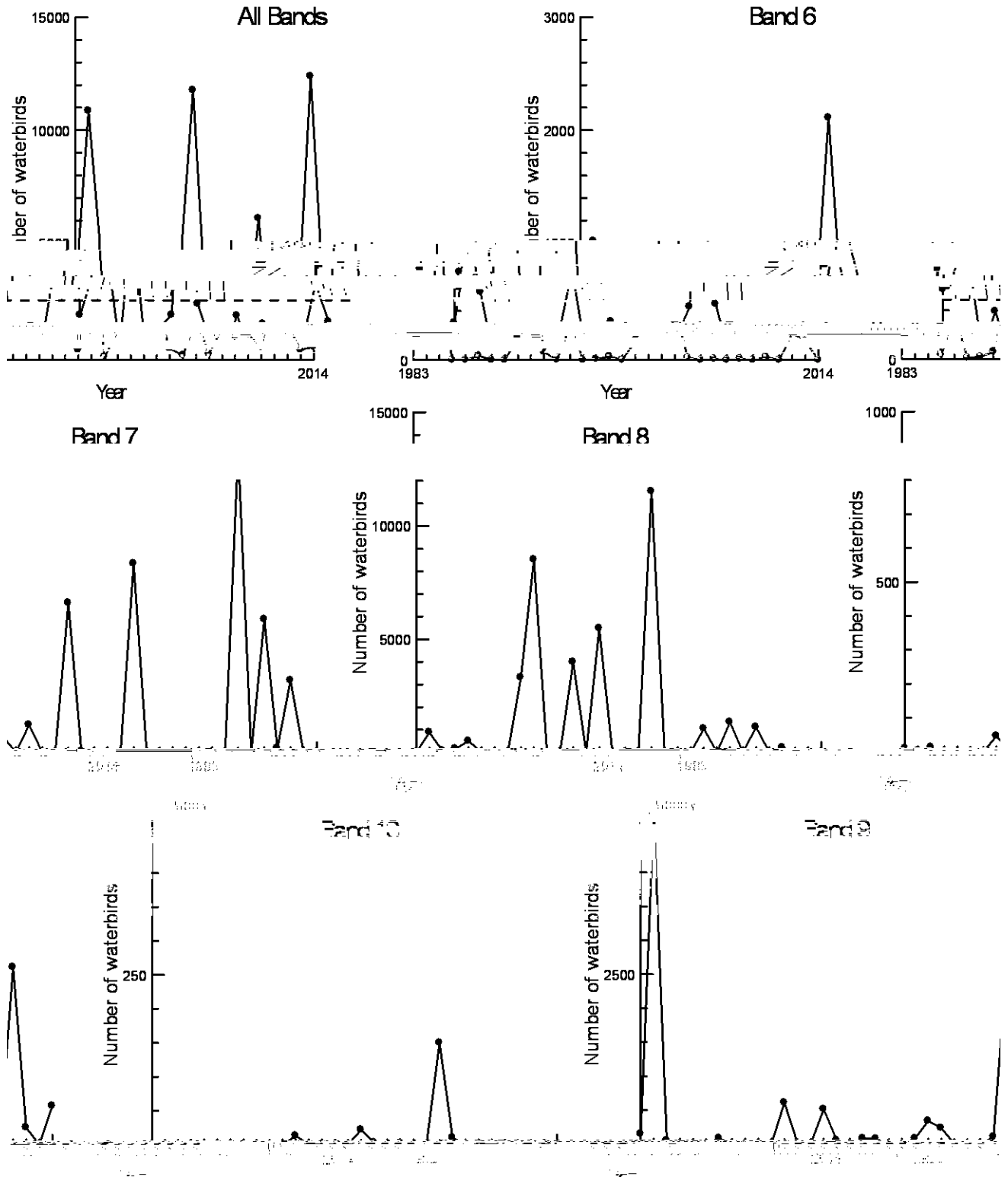
_____ All Bands _____ Band 1 _____

Scales vary on graphs dashed line indicates long term average

Figure 20. Freckled duck Bands 1-5

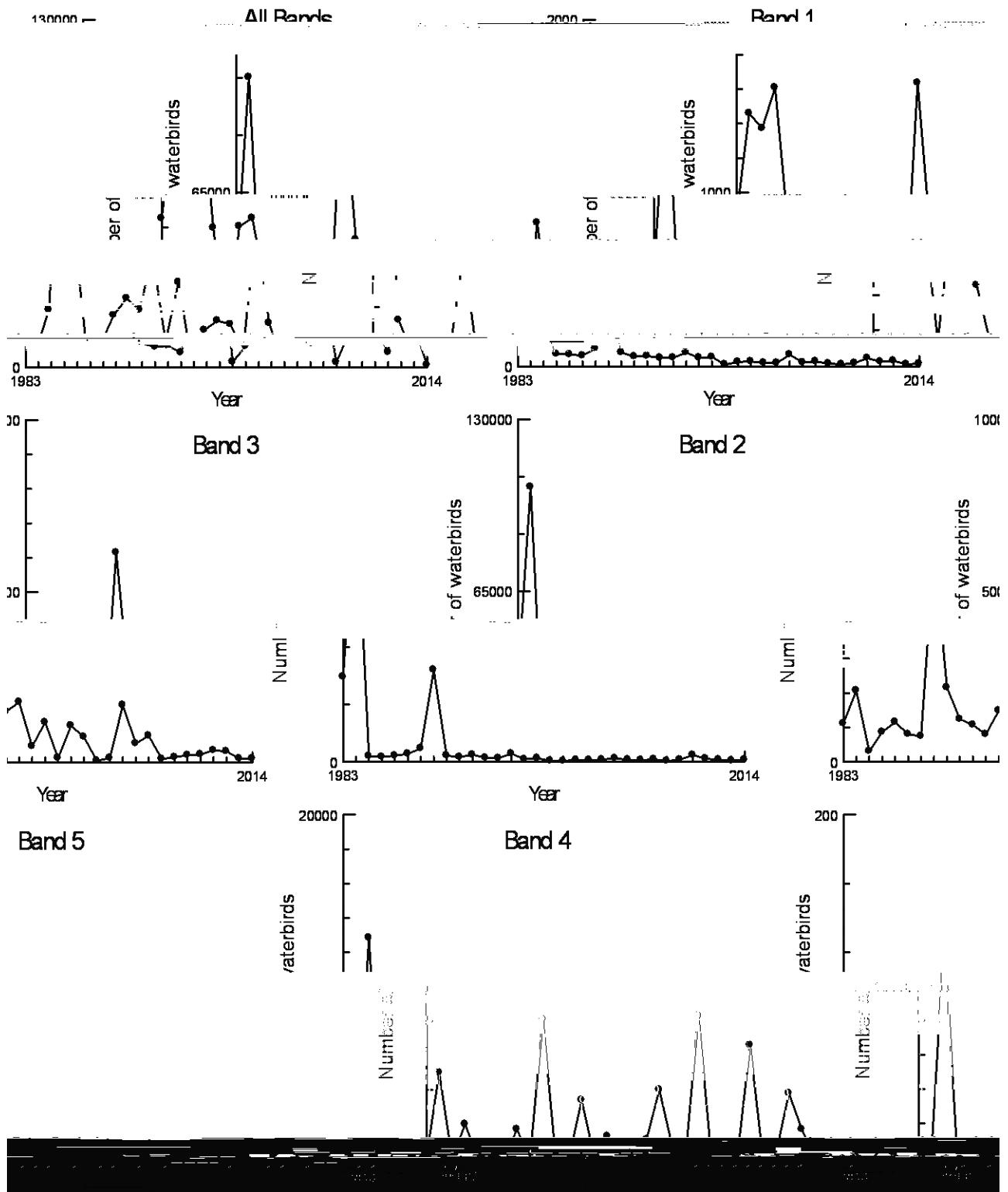
Scales vary on graphs dashed line indicates long term average

Figure 21. Freckled duck Bands 6-10



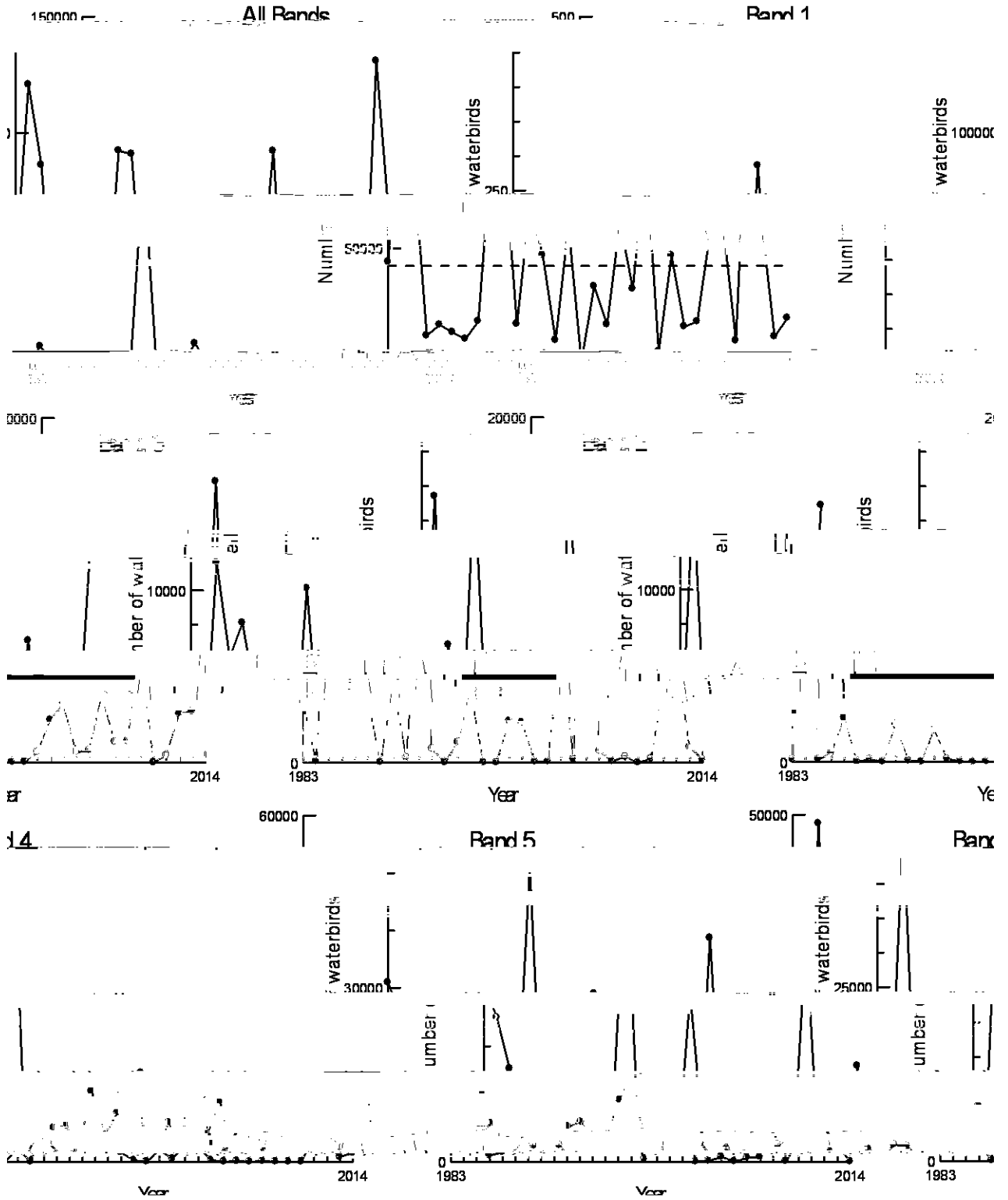
Scales vary on graphs dashed line indicates long term average

Figure 22. Australian shelduck Bands 1-5



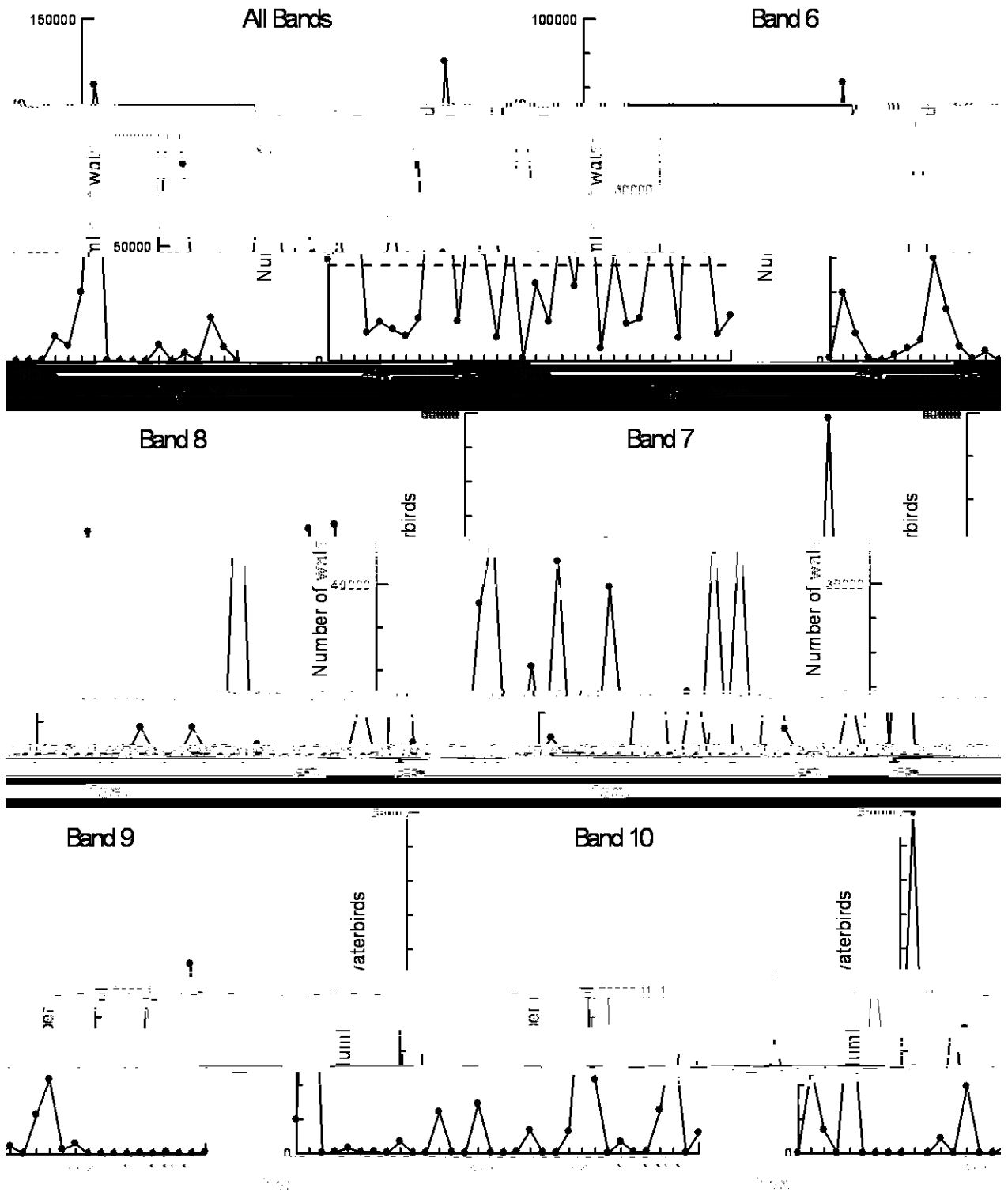
Scales vary on graphs dashed line indicates long term average

Figure 24. Pink-eared duck Bands 1-5



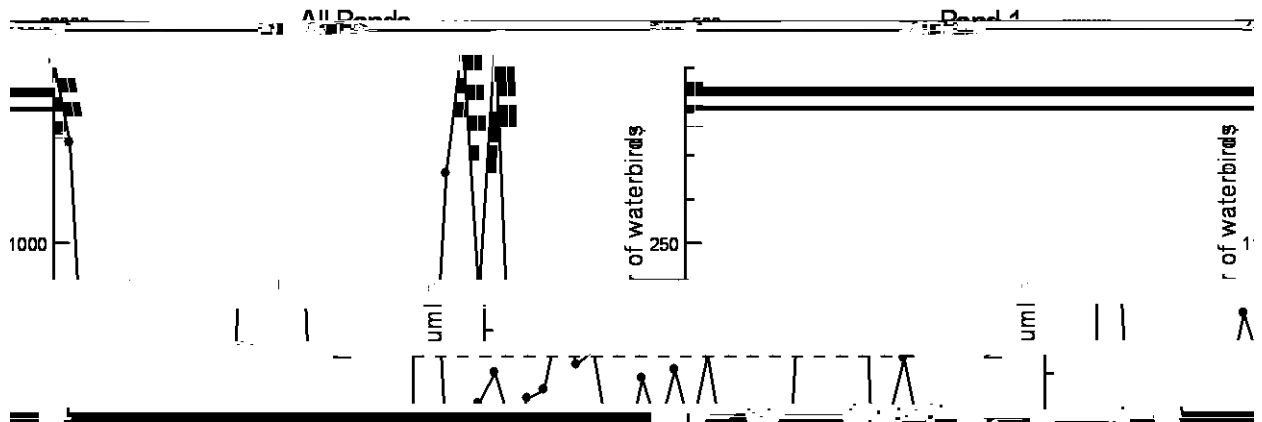
Scales vary on graphs dashed line indicates long term average

Figure 25. Pink-eared duck Bands 6-10



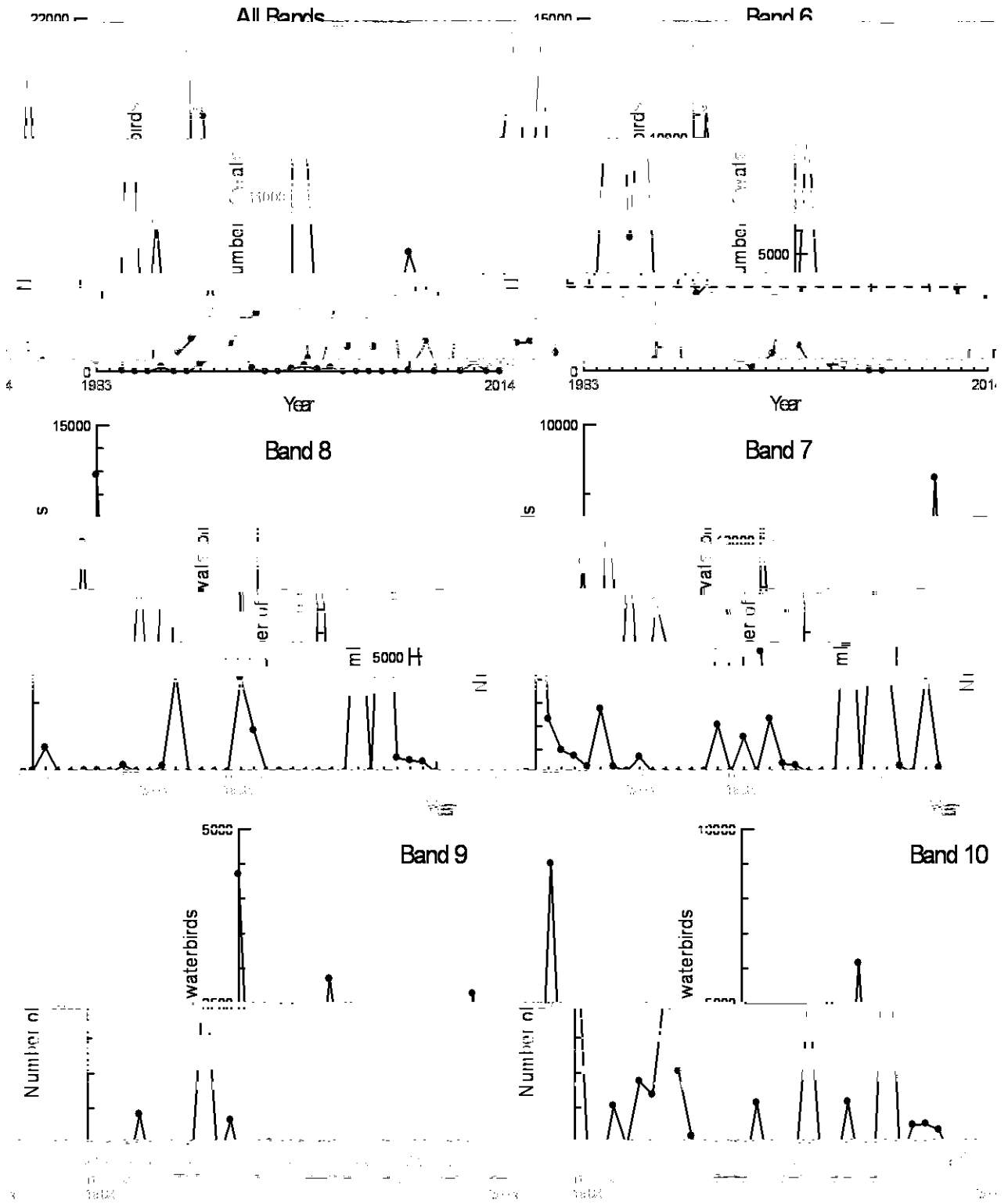
Scales vary on graphs dashed line indicates long term average

Figure 26. Plumed whistling-duck Bands 1-5



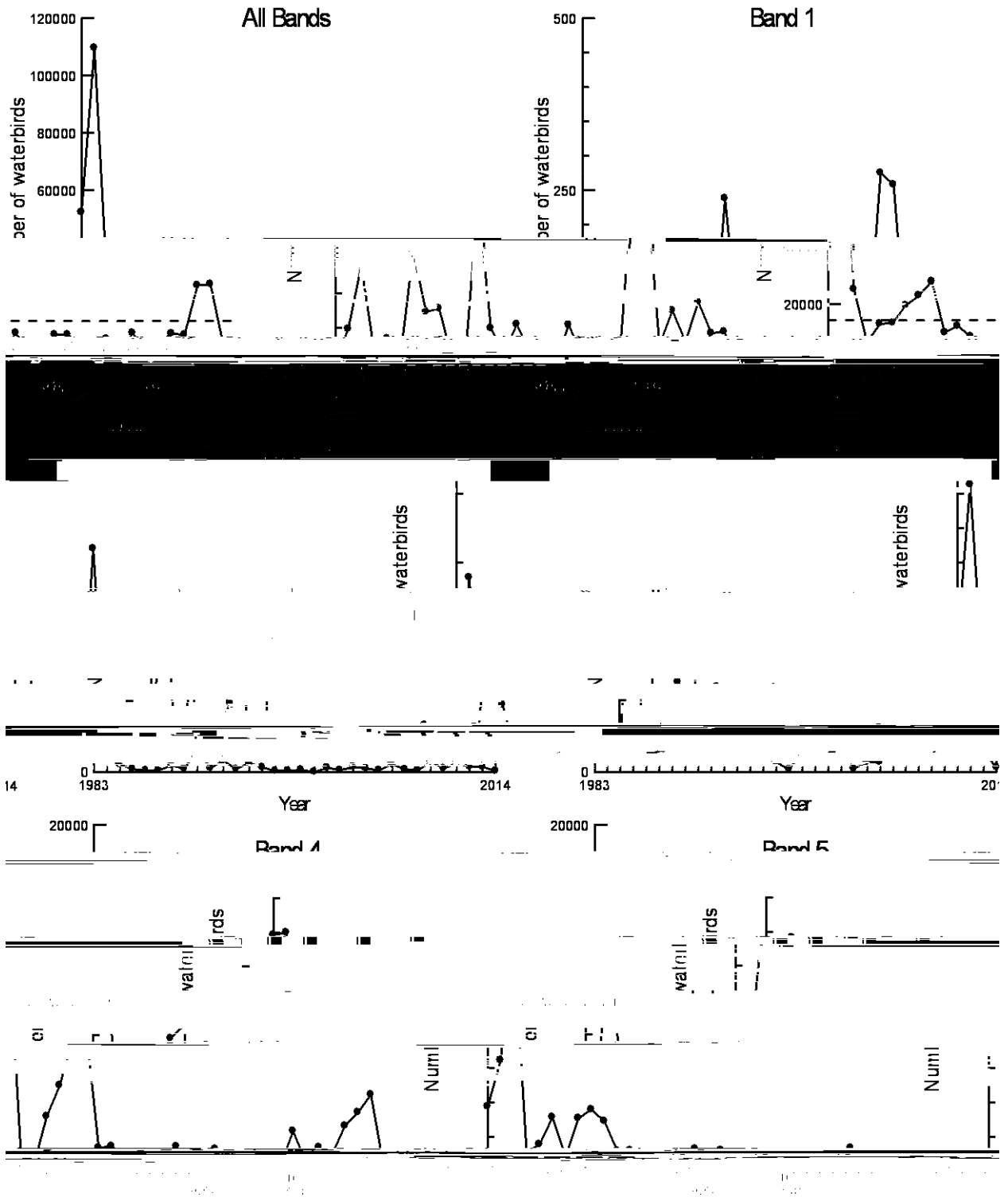
Scales vary on graphs dashed line indicates long term average

Figure 27. Plumed whistling-duck Bands 6-10



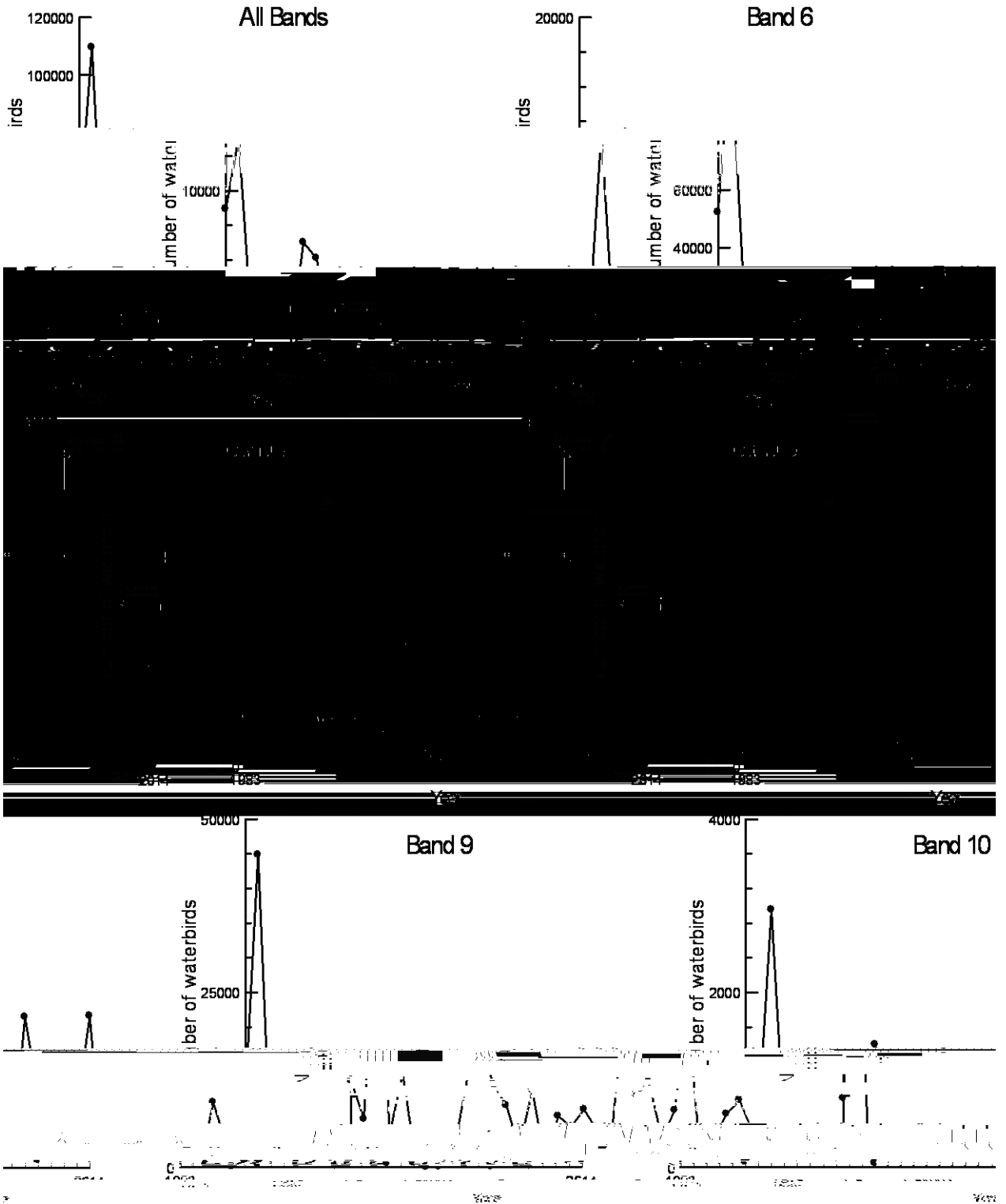
Scales vary on graphs dashed line indicates long term average

Figure 28. Australian wood duck Bands 1-5



Scales vary on graphs dashed line indicates long term average

Figure 29. Australian wood duck Bands 6-10



Scales vary on graphs dashed line indicates long term average